



SINTERIT SIEVE

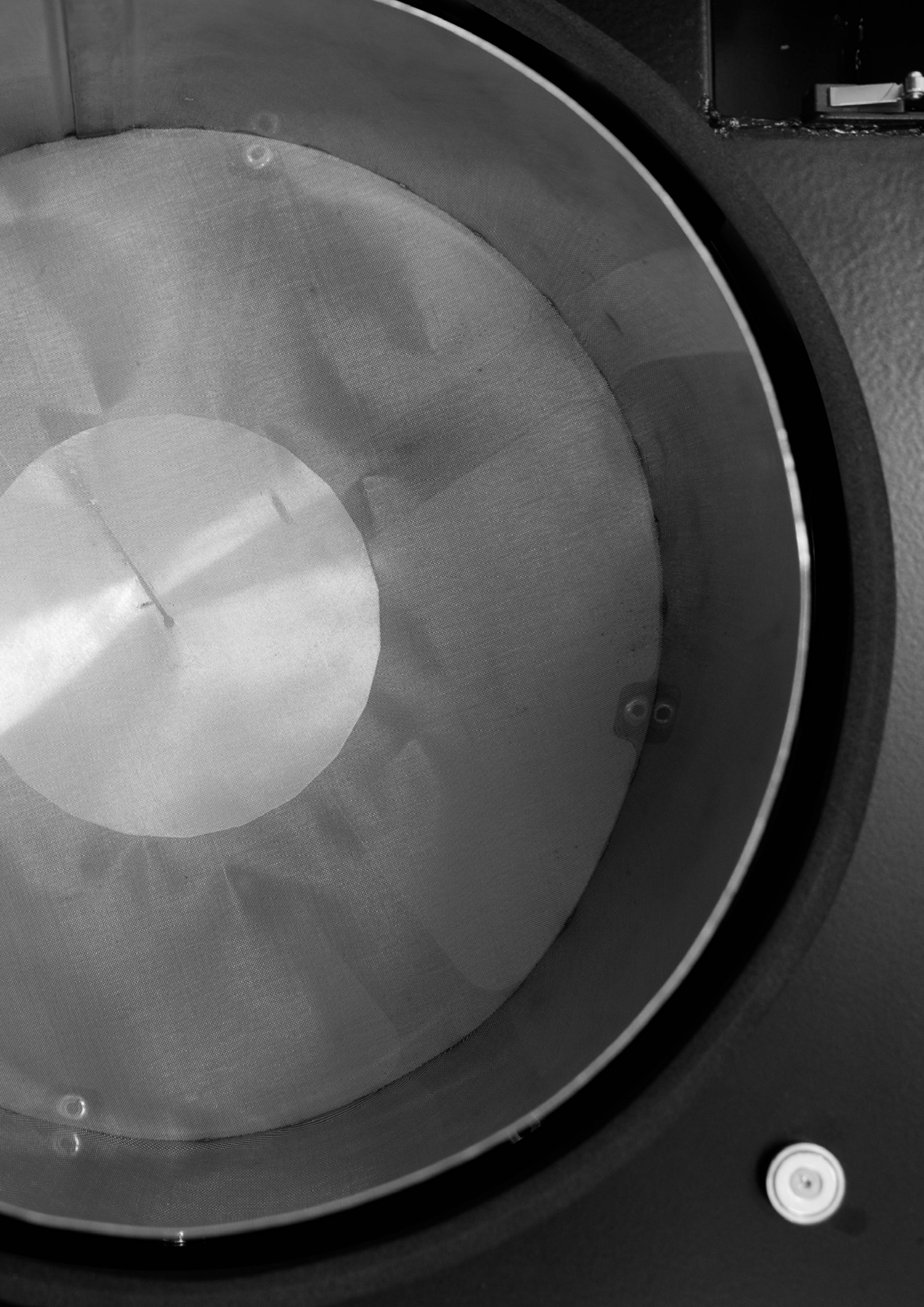
USER MANUAL





Table of contents

1. Contents of the SINTERIT SIEVE pack	5
2. Information about legal regulations	5
3. Disclaimer	5
4. Trademarks	5
6. Terms of warranty	6
7. Exclusion of warranties	6
8. Marking text conventions used in the document	7
9. Dictionary	8
10. Description of the construction of the sieve	8
11. Specifications	9
12. Technical support	9
13. Important safeguards and warnings	10
14. Information on supplies	12
15. Initial startup of the machine after delivery	13
16. Sieving process	14
17. Maintenance and service of the Sinterit Sieve	15



1. Contents of the SINTERIT SIEVE pack

- Sieve
- Powder Container
- Allen Screwdriver
- Removable feets
- User manual

2. Information about legal regulations

No part of this publication may be reproduced, stored in any information retrieval system, or transmitted in any form or by any means (electronically, mechanically, photocopied, recorded, or otherwise) without the written consent of Sinterit Sp. z o.o.

There will be no liability for patent infringement in connection with the use of information contained in this manual. There will be no liability for damage resulting from the use of the information contained in this manual.

This manual contains content exclusively for the provision of information and the use by individuals professionally trained and engaged in the operation and maintenance of the equipment described below.

This manual serves to assist in the correct use of the device, perform basic maintenance and, if necessary, to solve simple problems, allowing to maintain the device in good condition.

The information contained in this document is intended for the use only with the product made by Sinterit Sp. z o.o. and called Sinterit Sieve. The company Sinterit Sp. z o.o. is not responsible for any use of this information in relation to other products.

Due to the constant development of Sinterit Sp. z o.o.'s products the information contained in this manual, specifications and markings are subject to change without notice.

3. Disclaimer

Although every effort has been taken to provide accurate information about the product, the company Sinterit Sp. z o.o. assumes no responsibility for any incorrect information or omissions. Sinterit Sp. z o.o. reserves the right to correct any errors and disclaims any liability in situations resulting from these errors.

Sinterit Sp. z o.o., nor any of the parties involved in the creation, production or delivery shall not be liable to the purchaser of this product or third parties for damages, losses, costs or expenses resulting from accident, misuse or use of a product not according to specifications or unauthorized modifications, repairs or alterations to this product, or failure to observe the manual Sinterit Sp. z o.o. on operating and maintenance.

The Sinterit Sp. z o.o. company shall not be liable for defects in the firmware SINTERIT Sieve.

The Sinterit Sp. z o.o. company is not responsible for any damage or problems arising from the use of other supplies than those designated by Sinterit Sp. z o.o. as dedicated.

4. Trademarks

SINTERIT product name and SINTERIT logo are registered trademarks of Sinterit Sp. z o.o.
All other brand names, products and trademarks are the property of their respective companies.

6. Terms of warranty

1. Sinterit Sp. z o.o. company hereinafter referred to as the Seller, guarantees to the Buyer the correct functioning of SINTERIT Sieve 12 months) on the basis described below.
2. The remaining liability of the Seller, including the warranty for defects in the product is
3. The device should be used in accordance with the manual provided.
4. The holder of the original, properly completed Warranty Card or the proof of purchase (invoice, receipt) of the Sieve is entitled to guarantee.
5. Requirements for warranty coverage are as follows:
 - a. statement of claim in the written form within the period of 14 days of failure occurrence and not using the sieve from the discovery of the defect;
 - b. sending your application together with the data downloaded by the application supporting the sieve with a copy of proof of purchase/Warranty Card;
 - c. Sinterit Sp. z o.o. determines the method of repair as follows:
 - commissioning a simple repair to the Buyer (sending the necessary parts and instructions);
 - sending the device at the expense of Sinterit Sp. z o.o. to the service indicated by Sinterit Sp. z o.o., the Buyer is responsible for the Sieve's safe packing;
 - Sieve exchange for a new one.
 - d. In the event of an error for reasons of misuse of the Sieve, Sinterit Sp. z.o.o. surcharges the Buyer with the costs of repairs, parts, and transport of equipment.
 - e. Within 14 days of filing the complaint Seller shall notify the Buyer about the way it has been handled.
 - f. The warranty period shall be extended by the time repair.
6. The risk of accidental loss or damage to the Sieve from the time its release or dispatch to the Seller charges the Buyer.
7. In case the equipment sent for repair under warranty is unjustified, the Buyer shall be charged the costs of transport in both directions and inspection costs of the device according to the price list.
8. Sinterit Sp. z o.o. reserves the right to change the terms of the warranty. The new warranty will not be applied retroactively to previously purchased products.

7. Exclusion of warranties

1. The warranty does not cover the maintenance parts: removable sieve.
2. The warranty does not cover printing powder.
3. The warranty does not include the right holder of the warranty to claim reimbursement of lost benefits due to defects of the device. Sinterit Sp. z o.o. is not responsible for damage to property caused by a defective product
4. The warranty also does not cover:
 - a. damages arising from chance events/unforeseeable circumstances (electrical fault, fire, inundation, flood, etc.);
 - b. mechanical, chemical fault and defects caused by them;
 - c. damage resulting from installation and operation the device under conditions or in a manner incompatible with the manufacturer's specifications, and used against safety regulations;
 - d. damage caused by the fault or by the user's lack of knowledge;
 - e. activities described in the manual, the holder of a guarantee is required to do on their own and at their own expense;
 - f. transport damage caused during moving the device to the service indicated by Sinterit Sp. z o.o., in particular, when for transporting non-original packaging without transport security was used;
 - g. damage arising from the use of other supplies than those recommended by Sinterit Sp. z o.o.;
 - h. damage and malfunctions resulting from repairs, alterations, fine-tuning or structural changes made without the written consent of Sinterit Sp. z o.o. or outside the service station indicated by the mentioned above company;
 - i. where it is found by the Sinterit Sp. z o.o. that the violation of the seals placed in the sieve and components included has taken place or the incompleteness of the device.

8. Marking text conventions used in the document

Listed below are descriptions of the symbols used on the device. They constitute a warning or convey the information to protect the user, other individuals and surrounding objects, and ensure correct and safe use of the device.



WARNING!

Warns that the initiation, omission of a specific procedure or inattention can cause physical injury or death to the user.



ATTENTION!

Announces that initiation or omission of a specific procedure can cause physical damage to the equipment.



WARNING!

The warning symbol indicates an inevitably dangerous situation which can result in death or serious injury, if not avoided. Before working with any equipment, you should be aware of the dangers associated with the flow of electric current, and become familiar with the standard procedures to prevent accidents.



ATTENTION!

Warns of the possibility of electrical shock.



CAUTION!

Beware of moving parts which can crush hands.



STOP!

Action prohibited.



IMPORTANT!

Getting to know with the information that is needed to perform a specific task.



ATTENTION!

It is necessary to wear protective gloves. Mandatory action when working with powder.



ATTENTION!

It is necessary to wear protective face mask. Mandatory action when working with powder.



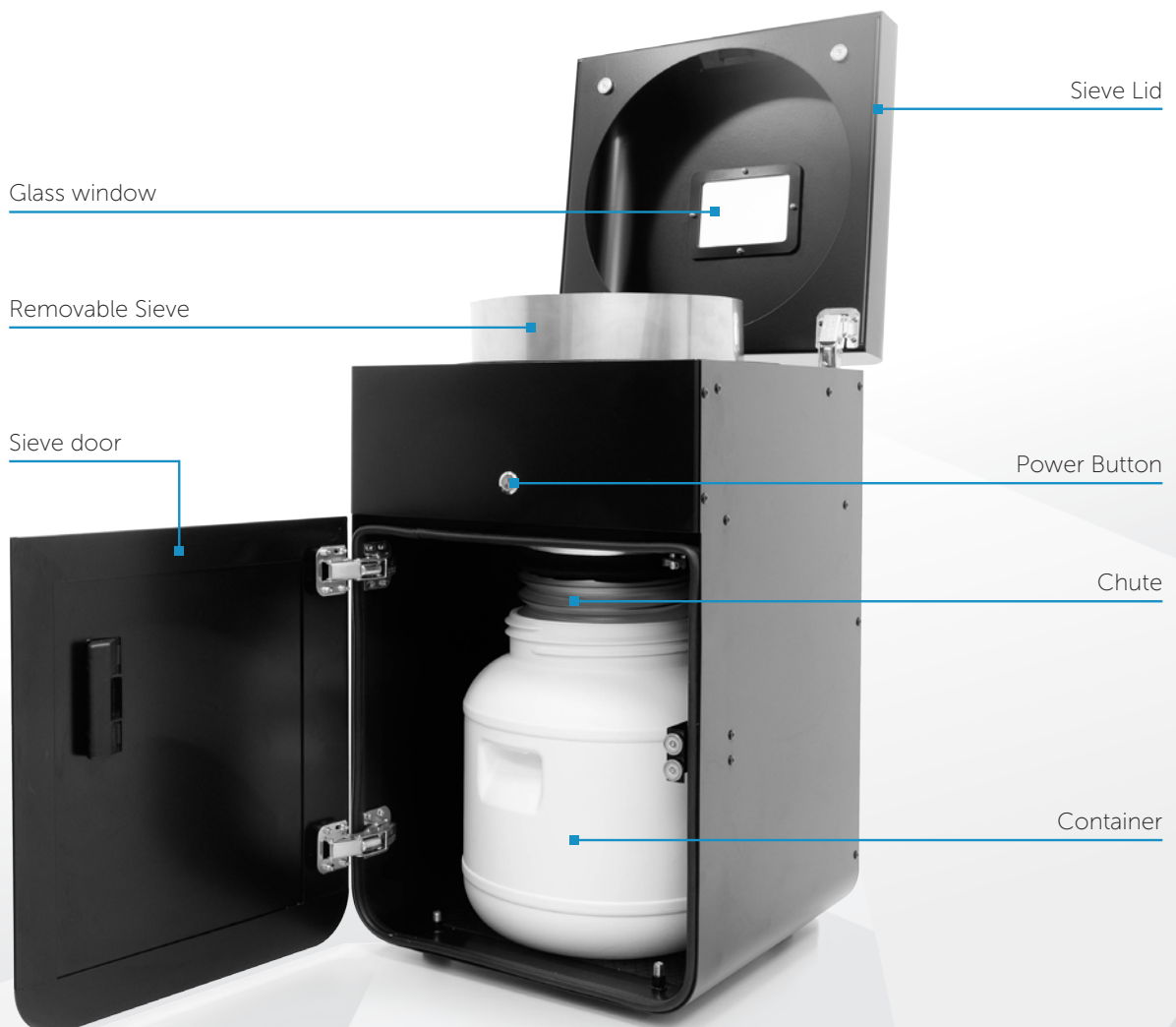
IMPORTANT!

You must read the instructions before taking action.

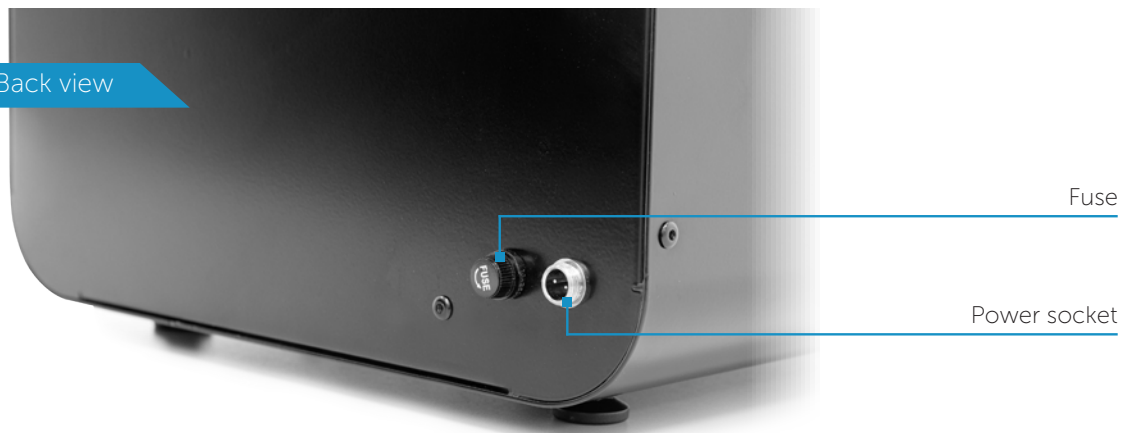
9. Dictionary

1. **SINTERIT LISA PRINTER (3D printer, printer, machine, device, product)** – a printer in the additive manufacturing technology (3D) of an LS (laser sintering) type. A device dedicated for professional and quick manufacturing of spatial prototypes or creating three dimensional models of objects.
2. **SINTERIT SIEVE** - a machine dedicated to sieve used powder.
3. **PA12 SMOOTH (PA12, polyamide powder, nylon powder, PA powder, PA12 powder, powder)** – a polyamide powder with the granulation at 20 – 100 micrometers, black, with its properties in accordance with the capabilities of the SINTERIT LISA printer.
4. **FLEXA BLACK** – a material from the group of Thermoplastic Polyurethane Elastomer (TPU). Elastic and flexible, and at the same time hard and resistant to inter alia chemical agents. Similar in its properties to rubber. Possesses good formability properties (returns to its initial position). Suppresses hits and shocks well. Not as resistant to temperature as PA 12.

10. Description of the construction of the sieve



Back view



11. Specifications

General technical data

Size of device (mm/in)	60x34x33cm // 23,60x13,40x13 inch
Size of the package (mm/im)	61x36x37cm
Unit weight (kg/lb)	18 kg
Package weight	20 kg

Power

Power	12V/2A
Maximum power consumption	24 W

Safety

Certificates	CE
--------------	----

12. Technical support

The latest information, technical support, and versions of the manual are available in the Support tab of the Sinterit Sp. z.o.o. company or by contacting: contact@sinterit.com

The list of distributors and technical support in specific countries can be found at www.sinterit.com/where-to-buy.

13. Important safeguards and warnings

To ensure safe use of the SINTERIT SIEVE product, please read and follow the instructions below. Keep this manual for future use. Also, be sure to follow all warnings and instructions marked on the product.



WARNING!

- Only trained and qualified personnel should install, replace or service the equipment.
- The device should be installed in accordance with these instructions and by trained personnel

A) Environment and the place of installation

- The SINTERIT Sieve should be placed at room temperature.
- The product should be placed on a flat, stable surface that extends beyond all edges of the product. If you place the product by the wall the distance between the product and the wall should be greater than 50 cm (20 in).
- The product will not work properly if it is set at an angle.



ATTENTION!

Do not place or store the product:

- outdoors;
- in areas with high dust;
- in places subject to shocks, vibrations, high temperature and/or humidity, and extreme changes in temperature and humidity;
- near water, or heat sources;
- near inflammable and volatile substances, concentrated acids or corrosive vapors;
- in places easily accessible to children and animals.

B) Power supply:

- Use only the power supply that meets the power and safety conditions.
- When connecting/disconnecting the plug to/from the power source always hold the cover, not the cord.



WARNING!

Do not use cables from other devices. Using the power cables from other devices or connecting the power cord supplied with the product to other devices may cause a fire or electric shock.



ATTENTION!

Never disassemble, modify or repair the power supply, plug or devices inside the sieve, except as described in the product's manual.

- The product should be placed near a wall outlet, which can be easily unplugged.
- When an extension cord is used for the power supply of the product, make sure that the total power consumption of all devices connected to it does not exceed the extension cord's limit. Also, make sure that the total current drawn by connected equipment does not exceed the ampere rating for AC wall outlet.
- Power cables should be placed in such a place that they are not rubbed, cut, pulled or twisted.



ATTENTION!

- Do not place objects on the power wires.
- Do not place power cords in path where people will have to walk or run.
- Pay special attention to the fact that the power cables are not bent at the points of connection of the sieve.
- Disconnect the plug whenever it is planned to shift/transfer the machine.

In the following situations, unplug the product from the power supply and contact a qualified service personnel:

- The power cord or plug is damaged,
- Some liquid got into the product,
- The product has been dropped or the case damaged;
- The product does not operate properly or clear changes in efficiency have been observed.
- Do not adjust controls that are not described in the manual.



ATTENTION!

Do not:

- spill liquid on the product;
- put any containers on the equipment, in particular containing water;
- handle it with wet hands;
- block or cover the vents and openings in the product;
- touch live parts.



ATTENTION!

If the device is not used for a long time (e.g. vacation), unplug the power supply from the socket.

14. Information on supplies

When working with the polyamide powder or other designated printer powder for the SINTERIT Sieve always wear protective kit attached to the above-mentioned device (glasses, gloves, dust mask).



WARNING!

When working with a polyamide powder, avoid inhalation or swallowing and contact with skin and eyes.

- If the PA powder is inhaled, move to a place with fresh air and gargle thoroughly with plenty of water. If coughing develops, contact a physician.
- If you eat a PA powder, rinse your mouth with water and drink 1-3 glasses of water to dilute stomach contents. If necessary, contact your doctor.
- If the PA powder gets in your eyes, rinse them thoroughly with water. In case of persisting eye irritation, contact a physician.
- When the PA powder gets in contact to your skin, wash it with soap and water.

- Polyamide powder should be stored in tightly closed containers, in a room at room temperature and low humidity.
- Powder should be stored out of reach of children and pets.
- If the device is not used for a long time, the powder should be stored in a sealed package.



WARNING!

- Do not attempt to burn/melt polyamide powder. The resulting sparks and hot mass, the powder is converted into can cause severe burns.
- Keep the polyamide powder away from fire.



STOP!

Do not dispose in municipal waste!

The used polyamide powder should be stored in sealed containers and disposed in accordance with local policy of waste plastic material.

15. Initial startup of the machine after delivery

1. Take the SINTERIT Sieve out of the package, remembering to carefully discard the protections from the foil and paper.
2. Place on a stable and hard surface (it is recommended for it to be the target location of the sieve).
3. Open the door, remove the protective bubble wrap.
4. Remove the container by pulling the chute up.
5. Take the equipment out from the container.
6. Mount the feet (included in the package).
7. Connect the device to the power supply.



16. Sieving process

1. Open the lid.



2. Open the door.
3. Put container inside and put on chute.
4. Close the sieve door.
5. Pour the previously prepared powder into the sieve. Do not overfill the sieve.



ATTENTION!

Always wear protective clothing (glasses, mask, gloves) when working with PA12 and other used with the Sinterit Sieve

6. Close the lid.
7. Press the power button quickly. The sieve should start working.



NOTE:

If you press and hold the power button, the machine will not start working. To run the machine, please press and release the button immediately.

You can watch the sieving progress through the lid window. The sieve will automatically stop work after about 18 minutes. If the whole powder is already sieved, you can stop the sieve manually, by pressing for 3 sec. the power button. The sieve will stop working if you open the lid/door as well.

The sieved powder is collected in the container. To get an access to the powder, please:

1. Open the door
2. Remove the chute from the container by pulling it up
3. Remove the container and store the powder in a dry place

17. Maintenance and service of the Sinterit Sieve

In order for the sieve to work efficiently and last a long time, ensure regular maintenance.



WARNING!

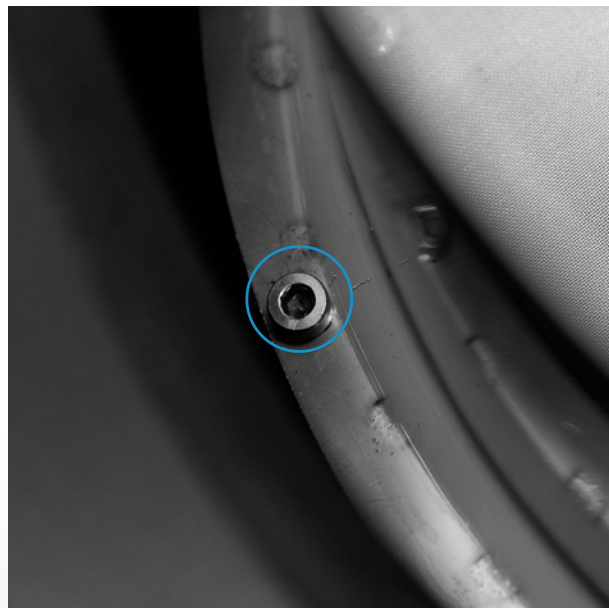
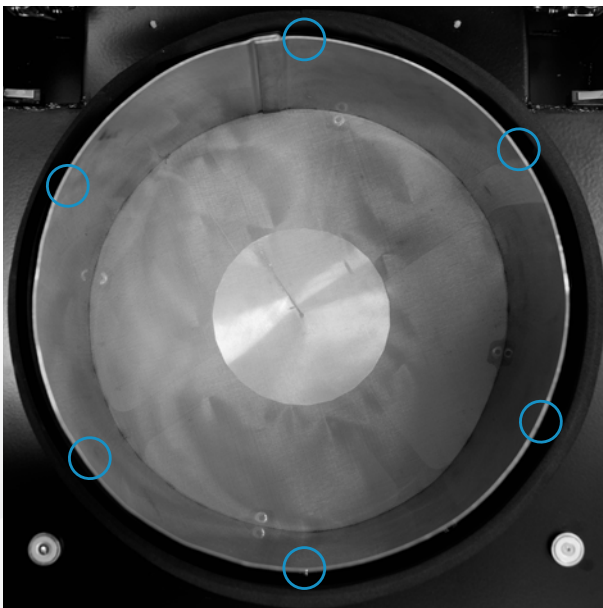
Before you start maintenance work, turn off the sieve power supply from the electrical socket.

The basic maintenance work:

- Cleaning the sieve with compressed air
- Replacing the sieve

If you want to replace/clean the sieve, please:

- Unscrew 6 bolts around the sieve
- Remove the sieve





Sinterit sp. z o.o.
ul. Rzemieślnicza 20G
30-363 Kraków
POLAND

www.sinterit.com
www.facebook.com/Sinterit
contact@sinterit.com
+48 730 293 207